

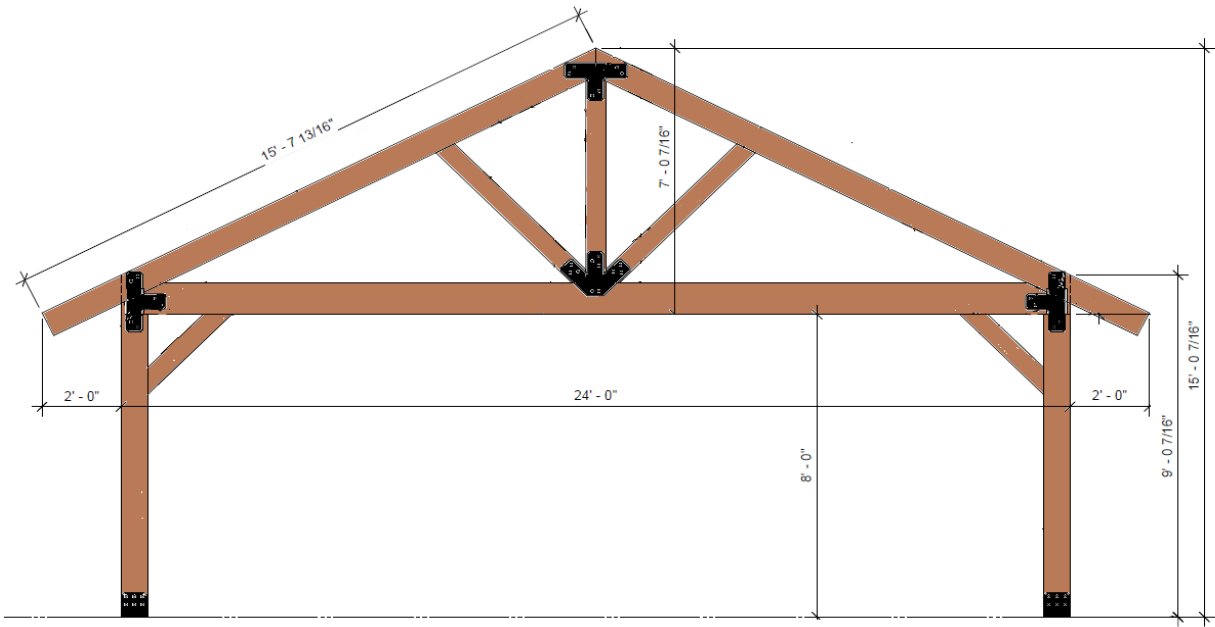


## Reception

1. All décor (rented or client-provided) need to be picked up by 10am the following morning unless specifically arranged otherwise with your coordinator.
2. Items not allowed:
  - a. ABSOLUTELY NO duct (or other abrasive) tape, nails, tacks, screws or any devise that may penetrate the beams can be used. You may utilize zip ties, fishing line, or scotch tape.
  - b. No flames are allowed anywhere on the property, with the exception of a ceremonial candle lighting during the ceremony if desired.
  - c. Bubbles (outside is okay), helium balloons, jelly beads ("Orbeez"), silly string, glow sticks, confetti, or "money guns".
  - d. Centerpieces cannot include loose glitter/sand, glass, or live flame (LED candles can be used).
3. Should you choose any decor outside the standards outlined, they must be approved by Bull Meadow.
4. The Barn utilizes 60" round guest tables, chivari chairs with an ivory cushion, and padded white resin chairs for the outdoor ceremonies. Guest tables seat up to 10 guests, and as few as 5 guests. Example: with our max capacity of 180 guests, and max of 20 guest tables, this would place 9 guests per table.
5. Any and ALL personal items brought by the wedding party MUST be TAKEN HOME the NIGHT of the EVENT, unless otherwise specified. This includes, but is not limited to: all bags, purses, food, gifts, etc. Items left with no significant monetary value will be assumed to be items you do not want and may be thrown away.
6. Any grassy areas are off limits to guests and are only used for Wedding Party & Family professional photography. Yard games can be set up out on the patio.
7. Fire pits are included in the price. If these are misused in any way (no objects in fire such as food, cigars, etc., sitting on the firepit, any other unsafe behavior) we will shut them off.

## Indoor & Outdoor Ceremonies

1. To preserve a beautiful ceremony area for all our couples and guests, the following items are not allowed: rice, birdseed, dried/crushed flowers, or blanketing of the aisle with fake leaves or flower petals of any kind (flower girls are allowed to sprinkle flowers!). If you have questions at all, please ask first rather than purchasing first.
2. Potted plants and vases are allowed, provided they are stand-alone and have a good heavy base such that wind gusts will not knock them over for outdoor ceremonies.
3. If you choose, the pavilion may be decorated by your florist on the day of the event, however everything adorning the pavilion must be wrapped, tied or hung. Tape, adhesive stickers, pins, nails or any other fastener that would damage in the wood will not be allowed anywhere.
4. Anything you might like sitting on the ground near the outdoor ceremony area should have a nice heavy base such that it will not fall over with the wind.
5. Shepherd's hooks may be used at the ceremony area. It is the responsibility of the couple, wedding party, or the florist/decorator to set these up. Hanging plants/items can be placed on the backs of the ceremony chairs along the aisle as well.
6. Two whiskey barrels are set out at the ceremony area and you may set items/flowers/decorations on top of them. Tacks, pins and nails cannot be used on the barrels.
7. Rows of ceremony chairs typically have 16 chairs (8 chairs on each side of the aisle). Micro-weddings typically have rows of 10 chairs (5 chairs on each side of the aisle). Indoor ceremonies have rows of 10 chairs (5 chairs on each side of the aisle), and guaranteed 70 chairs with remaining guests at tables, unless otherwise specified by your coordinator.
8. Electrical outlets are available on both back posts of the pavilion.
9. Length of the ceremony isle: ~75ft long x ~5ft wide. See below for dimensions & photos of the pavilion.



**Examples of acceptable ceremony decoration:**



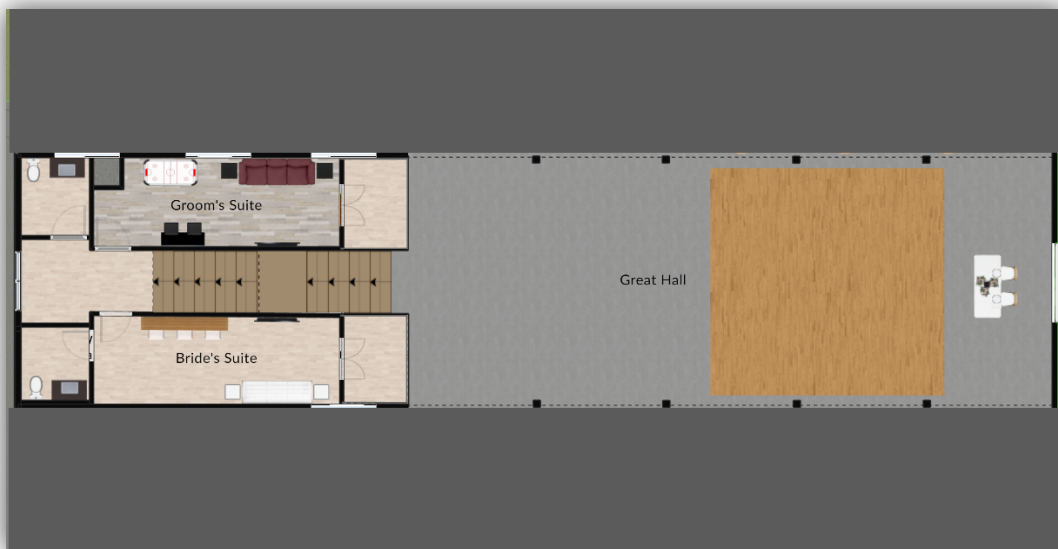


# Barn Layout

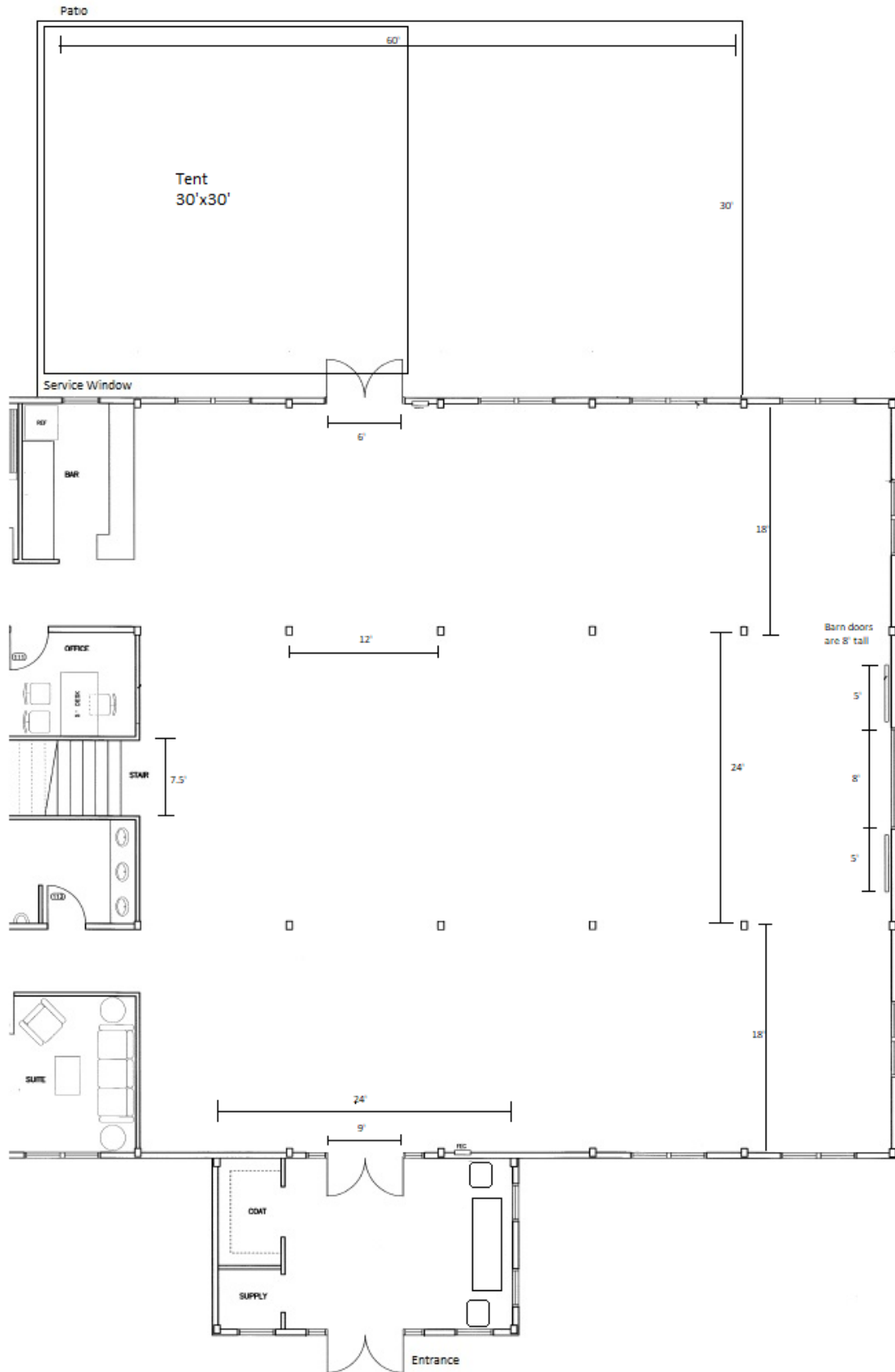
First Floor:



Second Floor:



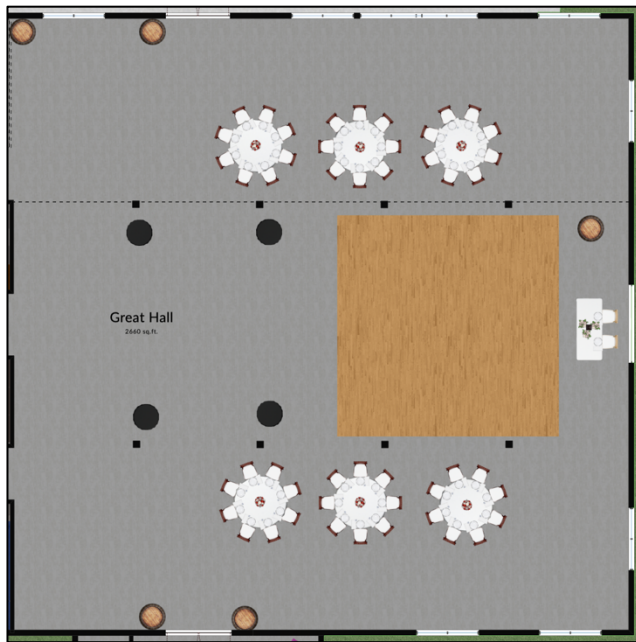
# Barn Doors & Beams Dimensions



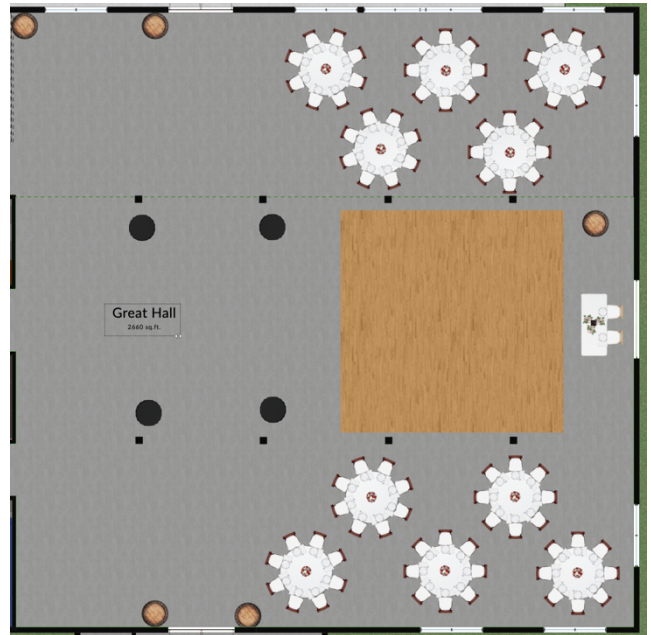


# Sample Seating Layouts – Round Tables

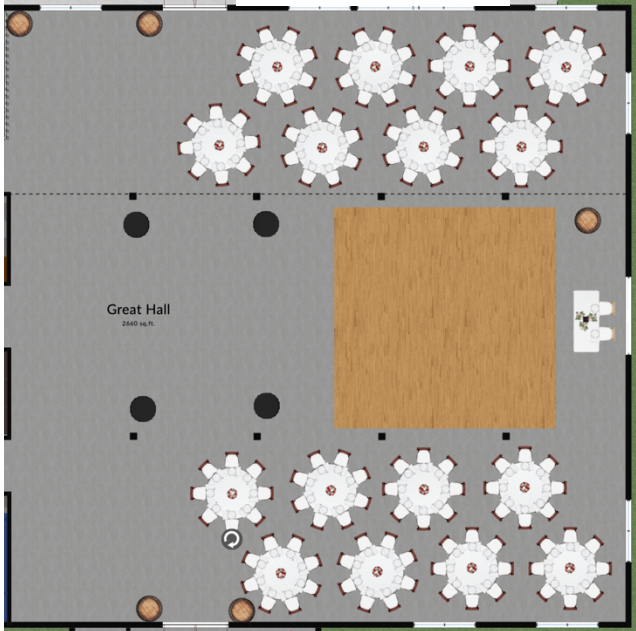
Micro (<50 guests)



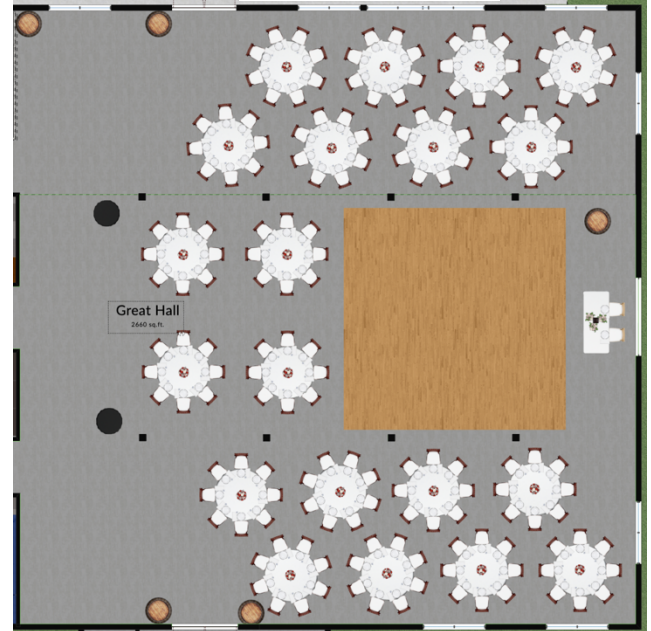
75 Guests



130 Guests

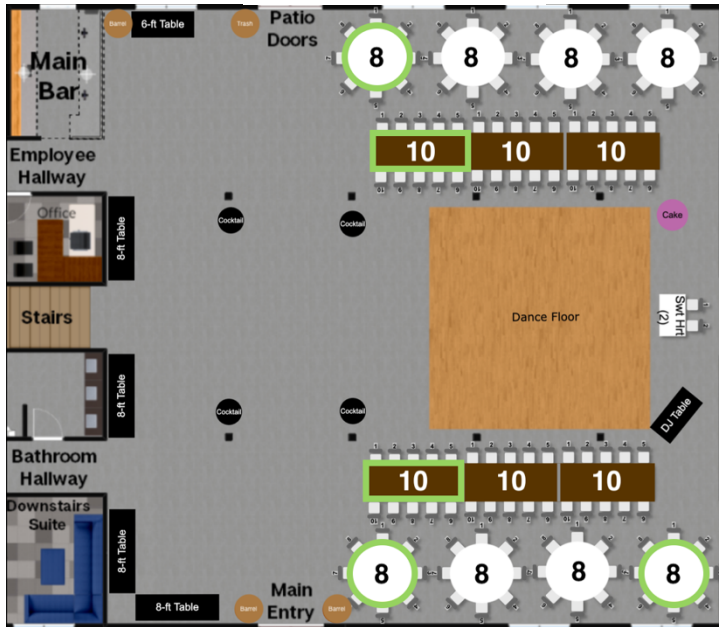


180 Guests

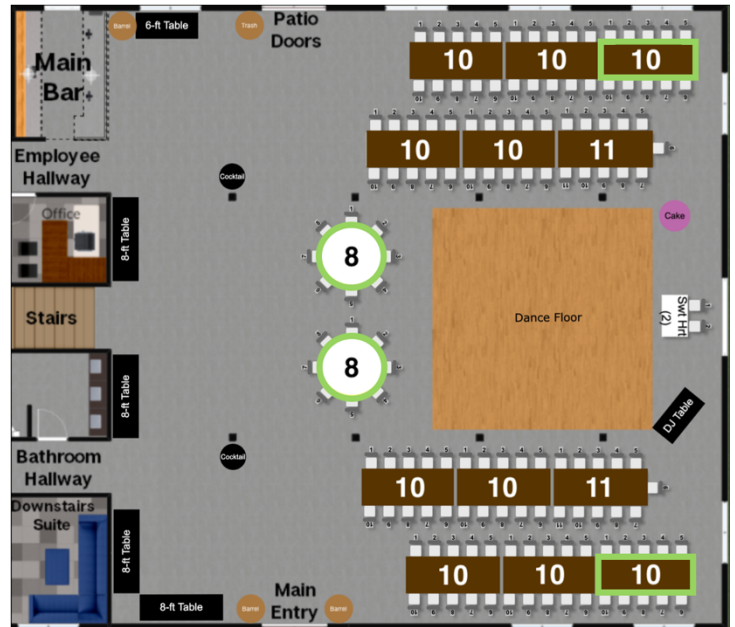


# Sample Seating Layouts – Farmhouse Tables

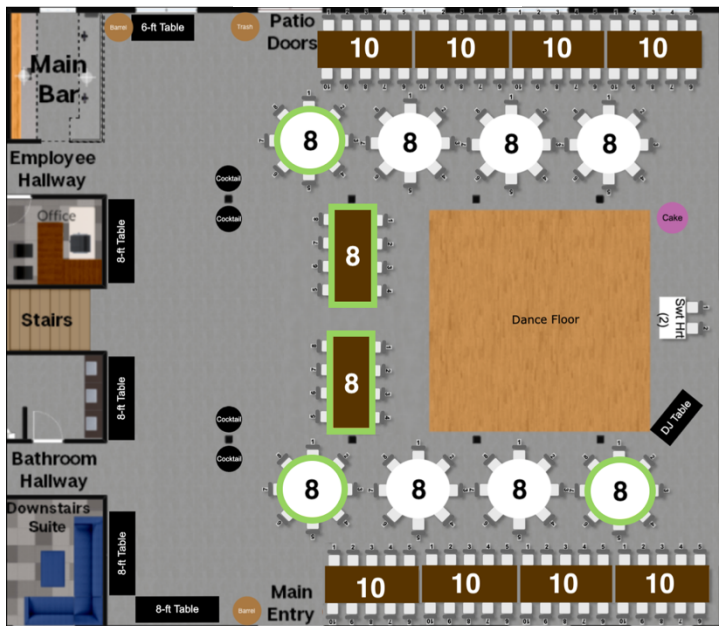
100-120 Guests



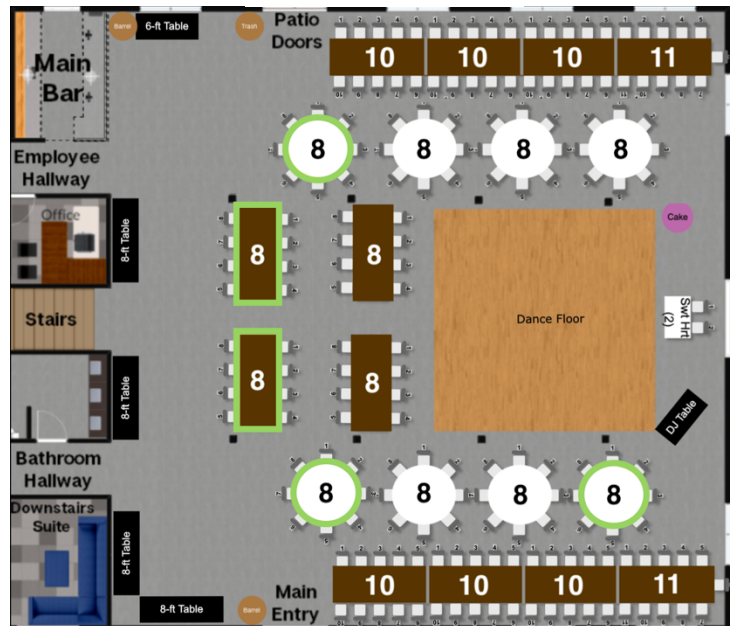
120-140 Guests



140-160 Guests



160-180 Guests



Farmhouse tables are available for rent. Round tables are included.

Most farm tables can be replaced with rounds and vice versa. See “Farm Table Pricing” in on the Wedding Resources page for more info!

Final floorplans considering your guest count are established with your coordinator.