



DJ's

- Set-up must be complete 1 hour before the wedding ceremony time.
- Vehicle can be parked out front or in the handicapped area to unload equipment, but after unloading, please park vehicle in the rear of the parking area.
- We provide an 5-6ft table and black linen in the barn for DJ use if you would like, but you're required to bring everything else.

Bands

- Set-up must be complete 1 hour before the wedding ceremony time.
- The band is inside on ground level concrete (no staging). Outside bands are not an option, but speakers can be set up outside as long as the music is played at a reasonable sound level.
- All band equipment must be setup and sound checks done by 1 hour prior to the wedding ceremony with no exception. This includes instances where the band is not starting until the social period or later.
- Bands must be completely broken down and equipment removed from the premises within one hour of completion of the event. It is the bands responsibility to have adequate help to ensure this is done in the proper amount of time.
- There is no space provided for musical or equipment cases. Anything that the band unloads must either be contained within the provided band area space or loaded back into a vehicle for later use when packing up.
- Vehicles can be parked out from or in the handicapped area for unloading, but after unloading, please park vehicles in the back of the parking lot.

Bakers

- Delivery of cake or dessert must be done 1 hour before the start of the ceremony.
- *Cake boxes must be provided by the bakery if the bride and groom wish to save the top layer of the cake.
- Baked items may only be delivered on the day of the event, no earlier than 1:00pm. Earlier set up time must be cleared with your Bull Meadow coordinator.
- Limited refrigeration space is available if absolutely necessary. Please seek out your event coordinator to assist.

- Cake must be completely assembled and sturdy enough to move from the refrigerator to the main hall without toppling or being damaged.
- If couples are adding their own toppers, Bull Meadow will have the final discretion on these. If they present an issue they may be put beside the cake.
- Unless specified by the baker, we assume all non-edible parts of the cake will not be saved. If pieces are to be saved, they must go home with you that night.
- Additional desserts need to come ready to serve. (Unless otherwise discussed ahead of time including associated costs) Bull Meadow does not provide platters or any other items to display baked goods, favors or decorations.

Photographers

- A copy of the timeline will be provided to you in advance (typically ~2 months prior to the wedding). We will give you a copy of the timeline when you arrive at the wedding and we follow it very closely due to dinner timing. Dinner will always be served according to the time noted on the timeline.
- If height is needed for a picture, please bring a ladder or ask us to provide you one in advance. Standing on chairs will not be allowed.
- The meadow and surrounding spaces are open to all to take pictures and mingle around (minus the pond/stream area). Please be mindful of the grass areas as to not damage or create holes in the ground. Please do not climb over meadow fencing, please go around the opening at the back.
- The outdoor barn doors can open and close for photo opportunities.
- Shoes must be worn at indoor and outdoor spaces at all times.

Equipment Rental

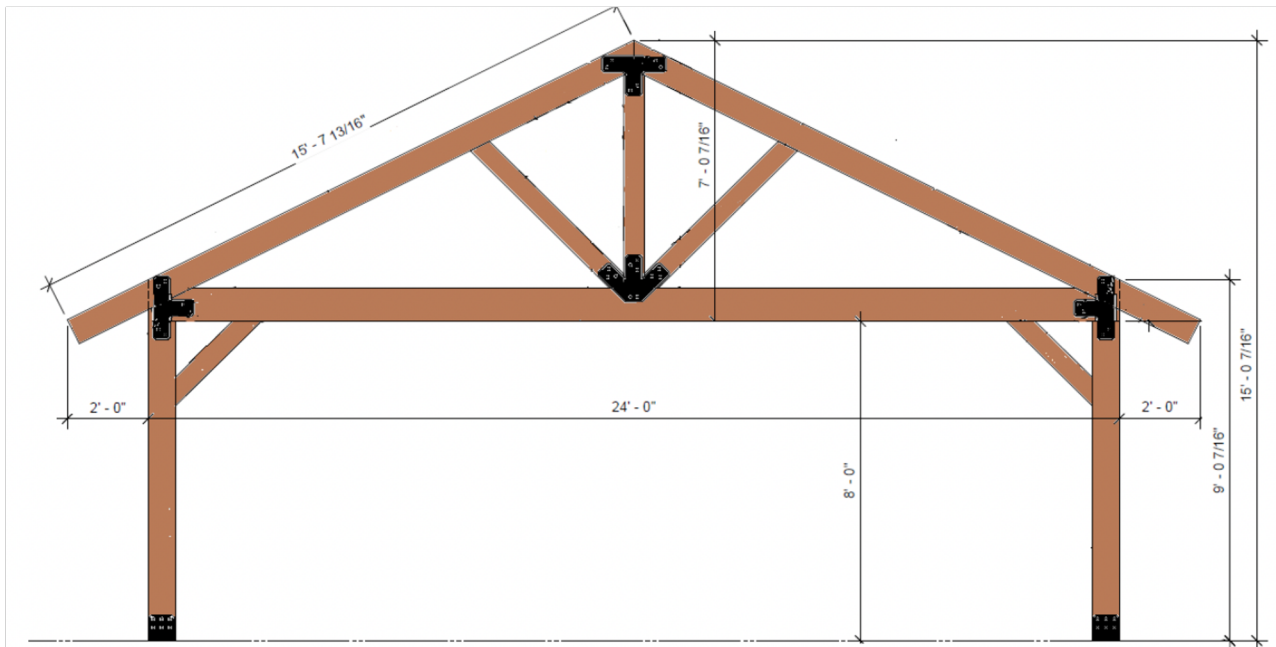
- Any outside rental equipment must be discussed with your Bull Meadow coordinator including an agreed upon delivery and pickup time. Depending on any setup or extraneous time needed by Bull Meadow staff to use/work with equipment there may be labor costs assessed. These should be discussed along with plans about equipment prior to ordering.
- Bull Meadow does have sidewalls and a heater available for rent for the tent. Please talk with your Bull Meadow coordinator to arrange this at least 7 days prior to your wedding.

Designer Touches

- We often work with designer Anna Yasharian, who owns the company [Designs by Anna](#).
- You can work with any decorator that you'd like, but we would prefer you work with Anna as she has been to the barn countless times, and she is very familiar with what we have/don't have, and our guidelines. She's able to make just about anything happen, and truly loves to make the Barn look one-of-a-kind for your special day!

Florists

- Contact the coordinator for the earliest time you can set up at the barn. It will need to be completed at least one hour before the start of the ceremony.
- Attaching flowers to fence, pavilion, barn, etc. needs to be done with items that won't puncture or damage the wood. Wrapping and tying flowers in place is acceptable. No adhesive products, nails or staples are allowed when decorating the facility.
- We do allow standard Sheppard's Hooks (1/4" puncture), although it is not Bull Meadow's responsibility to set them up.
- If items are borrowed or rented as part of the decoration, they will need to be removed from the Barn that night unless otherwise discussed and approved by the coordinator, or using the Decoration Clean Up Services provided by Bull Meadow (pickup by 10am the following morning).
- No live flames are allowed as decorations anywhere on the property, except for a candle lighting ceremony if desired.
- Centerpieces may not include items such as: confetti, loose glitter on the tables, sand, shards of glass, flame of any kind (LED candles can be used)
- Potted plants or other such potted items are allowed around the edges of the pavilion or barn for decoration provided they are stand alone and have a good heavy base to protect from the wind.
- In case a wedding couple wishes to decorate the ceremony pavilion you can find the dimensions below:



Barn Doors and Beams Dimensions & Measurements

